

Step into the Future
with PV Floor



PVFLOOR.COM



PV WALKABLE FLOOR

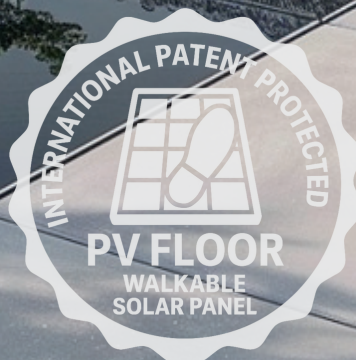
SIZE



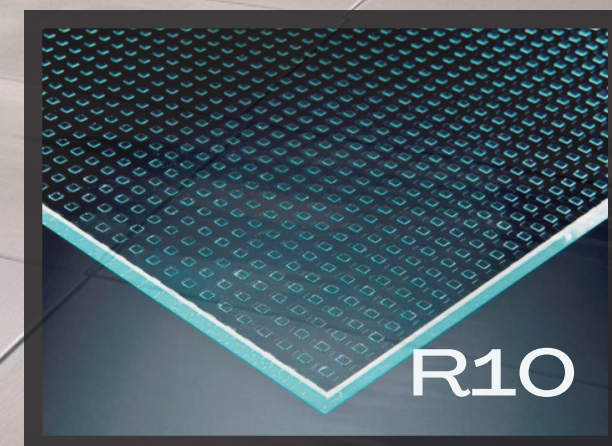
PVFLOOR.COM

FEATURES

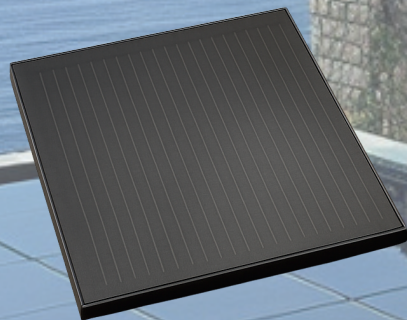
- High Durability
- Non-Slip Surface
- Water and Dust Resistance
- Aesthetic Design
- Versatile Application
- Easy Installation
- Resists even heavy rains
- Provides air circulation
- Easy to Clean



GLASS



ANTI-SLIP FLOORING GLASS



PVFLOOR.COM

PVF-08-30W

Electrical data test conditions (STC)

Nominal peak power	30	P_{mpp} (Wp)
Open-circuit voltage	6,49	V_{oc} (V)
Short-circuit current	5,54	I_{sc} (A)
Voltage at nominal power	5,58	V_{mpp} (V)
Current at nominal power	5,38	I_{mpp} (A)
Power tolerance	0 / +5	Wp
Module Efficiency	17,00	%

STC: Irradiance 1000W/m² , Cell temperature 25°C, AM1.5; Tolerance of Pmax: ±5%;

Mechanical description

Width	450	mm
Height	450	mm
Thickness	10,50	mm
Weight	5,2	Kg (±%5)
Cell type	10 BB	Monocrystalline Half-Cut
Number PV cells	8	pcs
Front Glass	10,00 mm	Anti-Slip Flooring Glass
Back Cover		White , Black , Transparent
Frame		Without Frame

Junction Box

Protection	IP68
Connector	MC4
Wiring Section	4,0 mm ²
Cables	350 mm

Maximum system voltage	1000	V
Operating module temperature	-40...+85	°C
Warranty	8	Years
Linear Performance Warranty	10	Years

PVF-18-65W

Electrical data test conditions (STC)

Nominal peak power	65	P_{mpp} (Wp)
Open-circuit voltage	13,97	V_{oc} (V)
Short-circuit current	5,57	I_{sc} (A)
Voltage at nominal power	12,04	V_{mpp} (V)
Current at nominal power	5,40	I_{mpp} (A)
Power tolerance	0 / +5	Wp
Module Efficiency	18,00	%

STC: Irradiance 1000W/m² , Cell temperature 25°C, AM1.5; Tolerance of Pmax: ±5%;

Mechanical description

Width	600	mm
Height	600	mm
Thickness	10,50	mm
Weight	9,3	Kg (±%5)
Cell type	10 BB	Monocrystalline Half-Cut
Number PV cells	18	pcs
Front Glass	10,00 mm	Anti-Slip Flooring Glass
Back Cover		White , Black , Transparent
Frame		Without Frame

Junction Box

Protection	IP68
Connector	MC4
Wiring Section	4,0 mm ²
Cables	350 mm

Maximum system voltage	1000	V
Operating module temperature	-40...+85	°C
Warranty	8	Years
Linear Performance Warranty	10	Years



MADE IN
TÜRKİYE



Customizable in terms of size, shape,
thickness, color, output power.

IEC 61215
IEC 61730



*Power Up Your Floors
with Solar Technology*



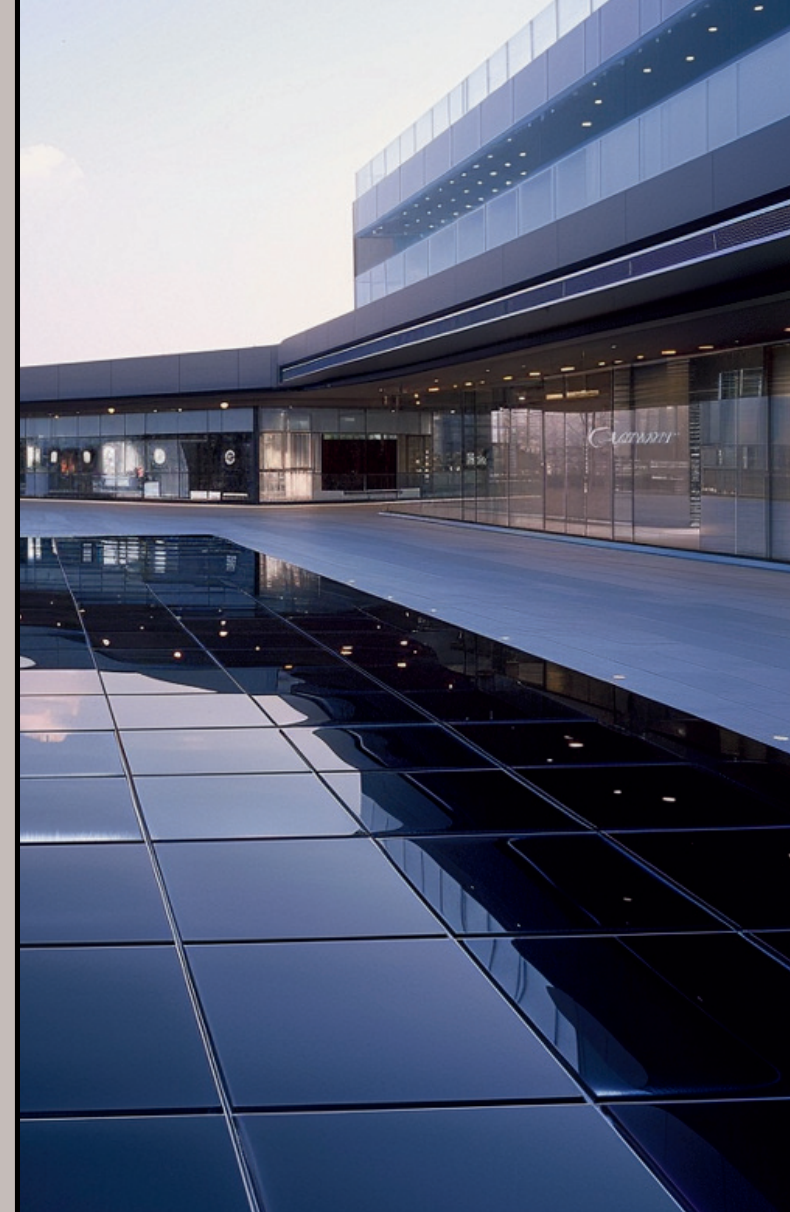
Patent Holder
Manufacturer

**ANKARA
SOLAR**



PVFLOOR.COM

info@pvfloor.com
+90 539 844 0 484



**PV WALKABLE
FLOOR**



All images, text, and other content included in this catalog are the exclusive property of PVFLOOR.com. This catalog and its contents are protected by copyright law.